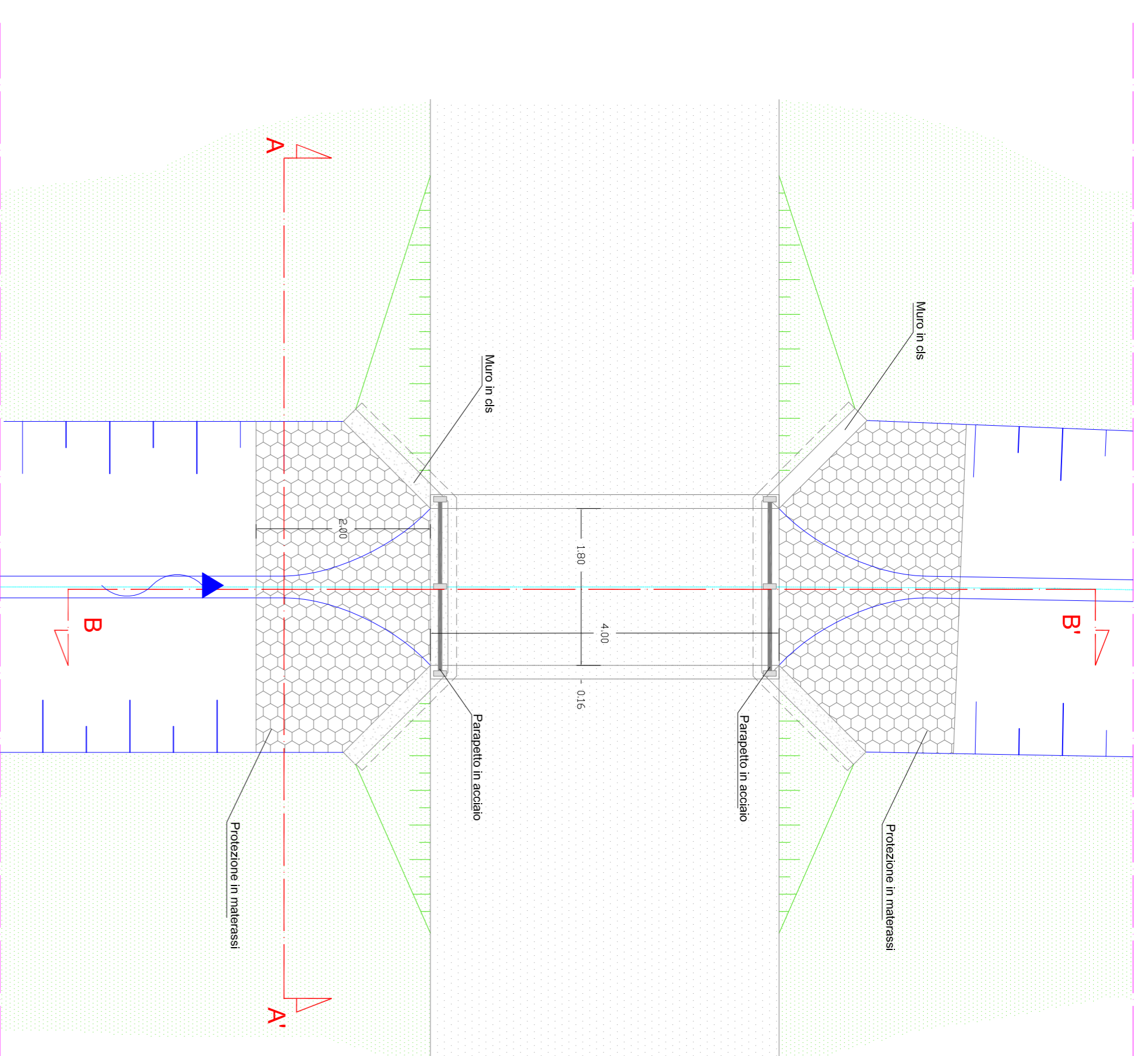
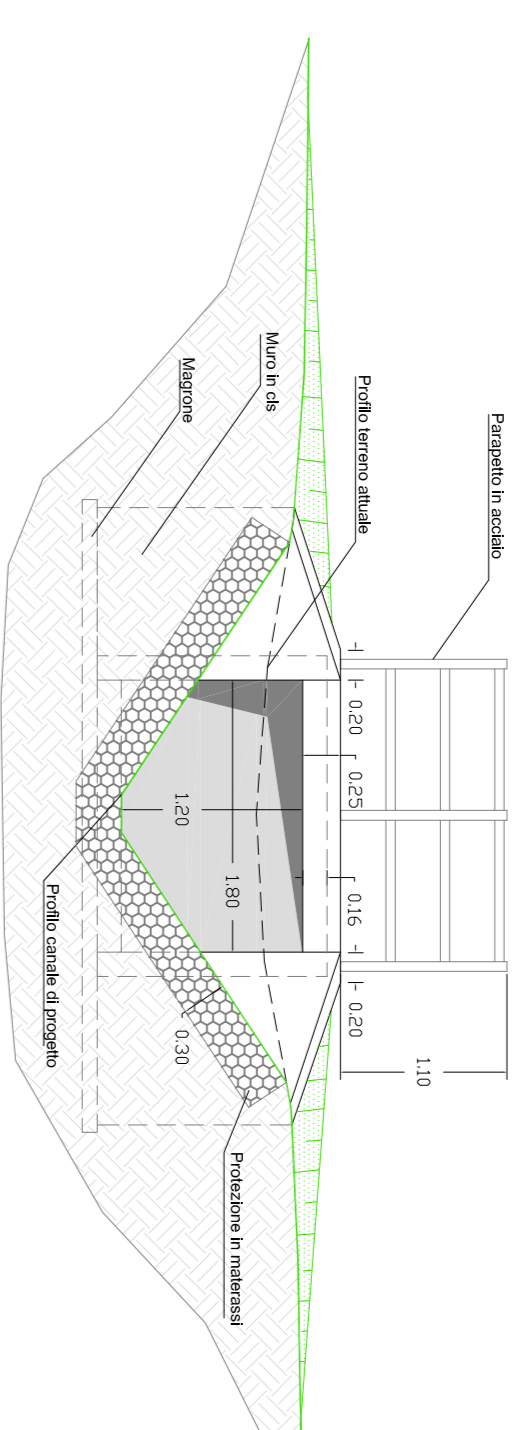


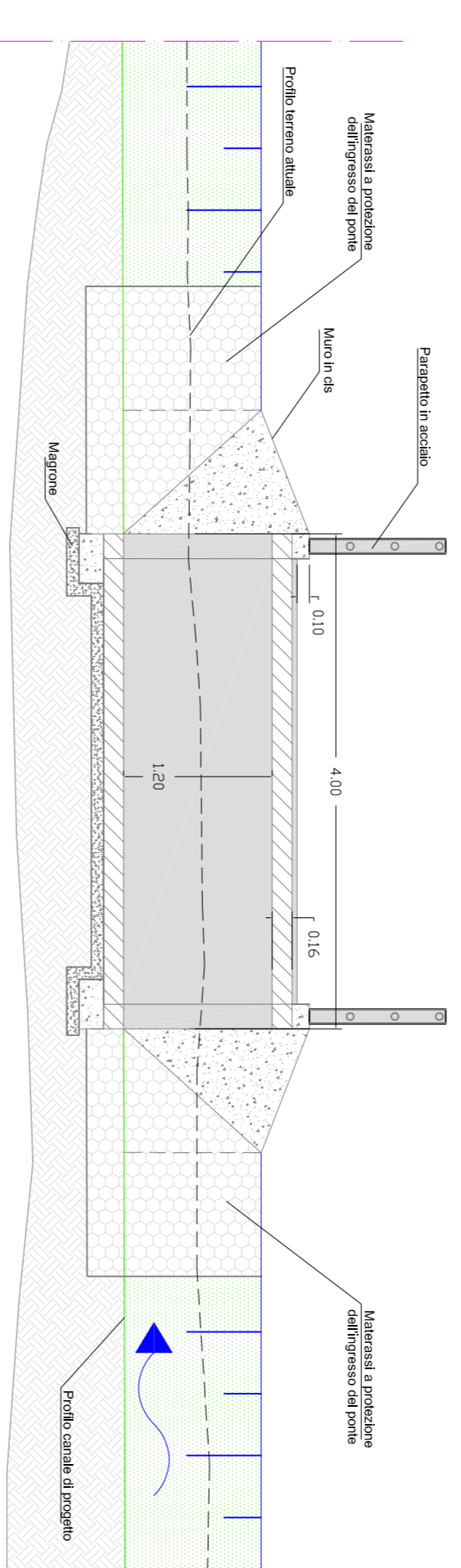
Particolare attraversamento tipo



Sez. A-A'

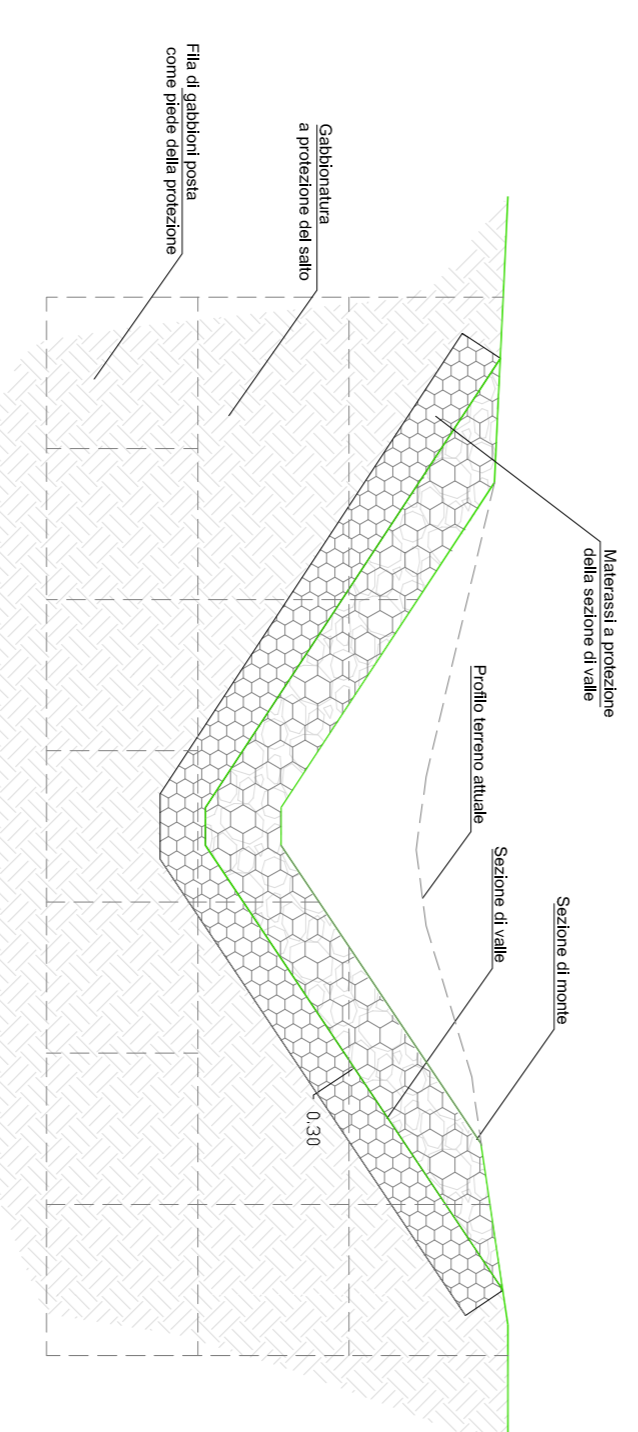
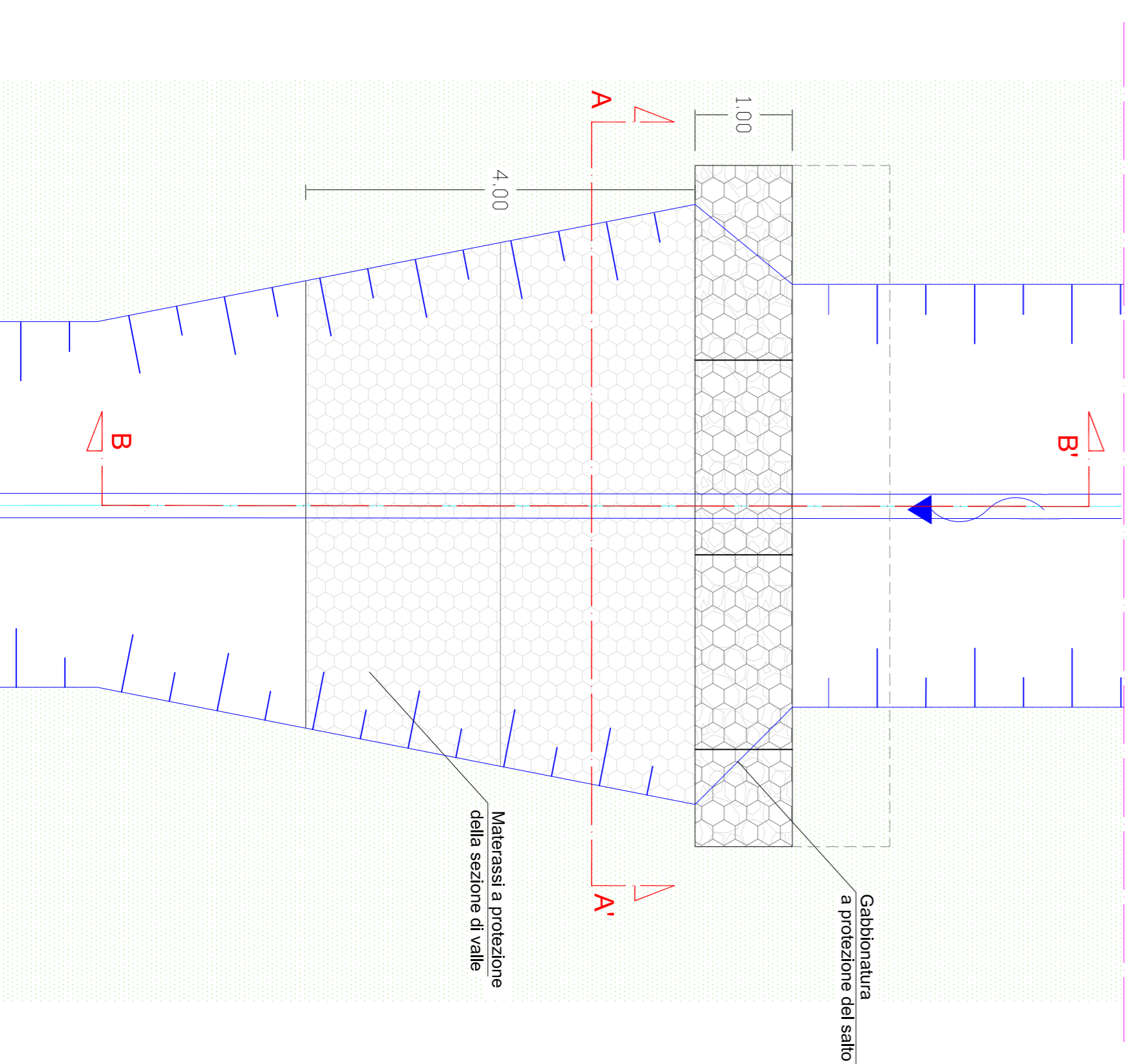


Sez. B-B'

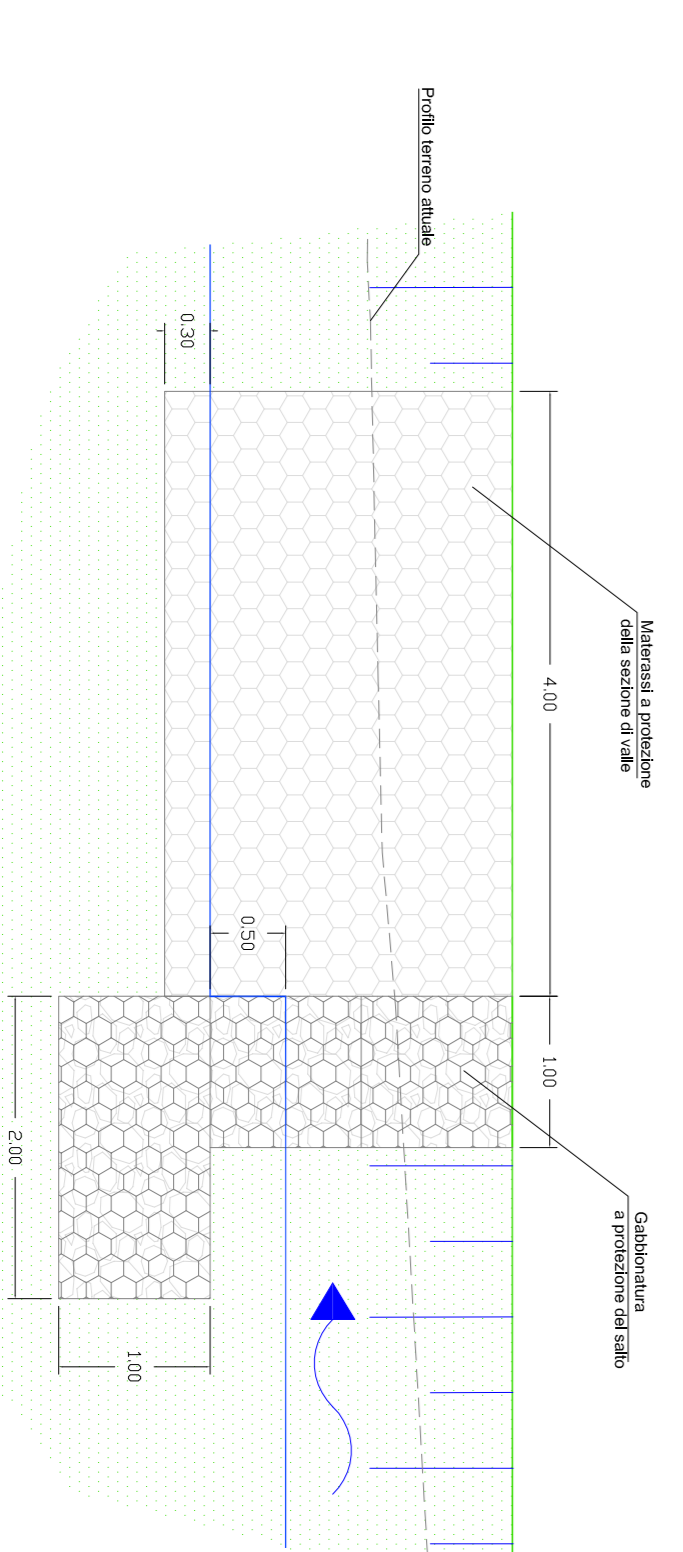


Particolare briglia tipo

Sez. A-A'



Sez. B-B'



PROVINCIA DI PISA COMUNE DI LARI



STUDIO IDROLOGICO E IDRAULICO A SUPPORTO DEL PIANO ATTUATIVO UTOE QUATTRO STRADE ZONA C COMPARTO 3

OGGETTO

Piante e sezioni tipo

TAVOLA	REC.	DATA	SCALE	NUMERO COMPLESS.	NOVE FILE
T05	00	Ottobre 2013	1:50	-	T05.pdf

PROGETTISTA	CONSULENZA IDROLOGICA E IDRAULICA	COMITANTE
INGENIUM Engineering B.Os. Ing. Cristiano Bernocchi	STUDIO ASSOCIATO INGENIUM Via Mazzini 74 50025 Pontedera	Immobiliare Fogliabene s.r.l.

02			
01	28/10/13	PRIMA EMISSIONE	
00	DATA	DESCRIZIONE MODIFICHE	